



TEST REPORT

Report No.:CA2106220019

Company: NingBo AnFeng Chemical Co.,Ltd.
Address: No.9 Yupan Road,eastem industrial zone,Xiangshan
Date Received: 2021.06.22
Date Tested: 2021.06.29
Tested Item: See the inside detail
Method: See the inside detail

TESTING LABORATORY IS ACCREDITED BY:

CNAS ISO/IEC 17025 certificate of independent test laboratory approval
 CNAS Certificate No.:CNAS L3100
 CMA Certificate No.:181009340174

WE HEREBY CERTIFY THAT:

The test(s) shown in the attachment were conducted according to the indicating procedures. We assume full responsibility for the accuracy and completeness of these tests and vouch for the qualifications of all personnel performing them.

	Name	Signature	Date
Engineer	Wei Wei	<i>wei.wei</i>	2021.06.29
Reviewed	Xiaohu Chen	<i>Xiaohu Chen</i>	2021.06.29
Approval	Ryback Chen	<i>Ryback Chen</i>	2021.06.29

NOTE:

- 1.This report will be invalid if reproduced in part or altered in any way.
- 2.This report refers only to the specimen(s) submitted to test, and is invalid if used otherwise.
- 3.This report is ONLY valid with the examination seal and signature of this institute.
- 4.The tested specimen(s)will only be preserved for thirty days from the date issued, if not collected by the applicant.





TABLE OF CONTENTS

1. GENERAL INFORMATION

1.1 DESCRIPTION OF SAMPLE	2
1.2 PHOTO OF SAMPLE	3

2. CHEMICAL ANALYSIS TEST

2.1 TEST CONDITION AND RESULTS	4
2.2 MEASUREMENT FLOW CHART	6

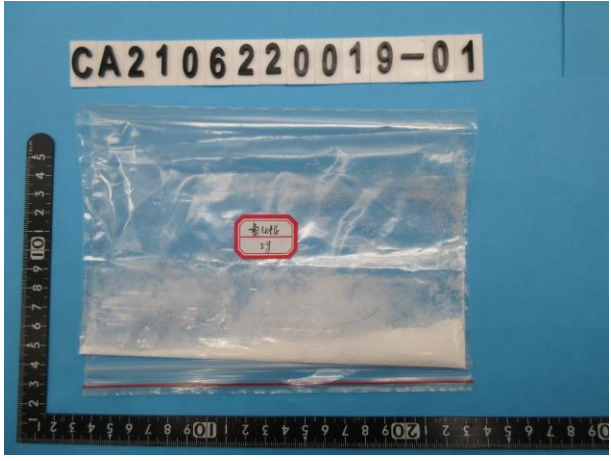


1. GENERAL INFORMATION

1.1 DESCRIPTION OF SAMPLE

Sample Name : silver cyanide
Model No. : ---
Lot No. : ---
Material : ---
Main Substance : ---
Buyer : ---
Supplier : ---

1.2 PHOTO OF SAMPLE

Sample NO.	Description of test part	Photo
01	silver cyanide	

2.CHEMICAL ANALYSIS TEST

2.1 TEST CONDITIONS AND RESULTS

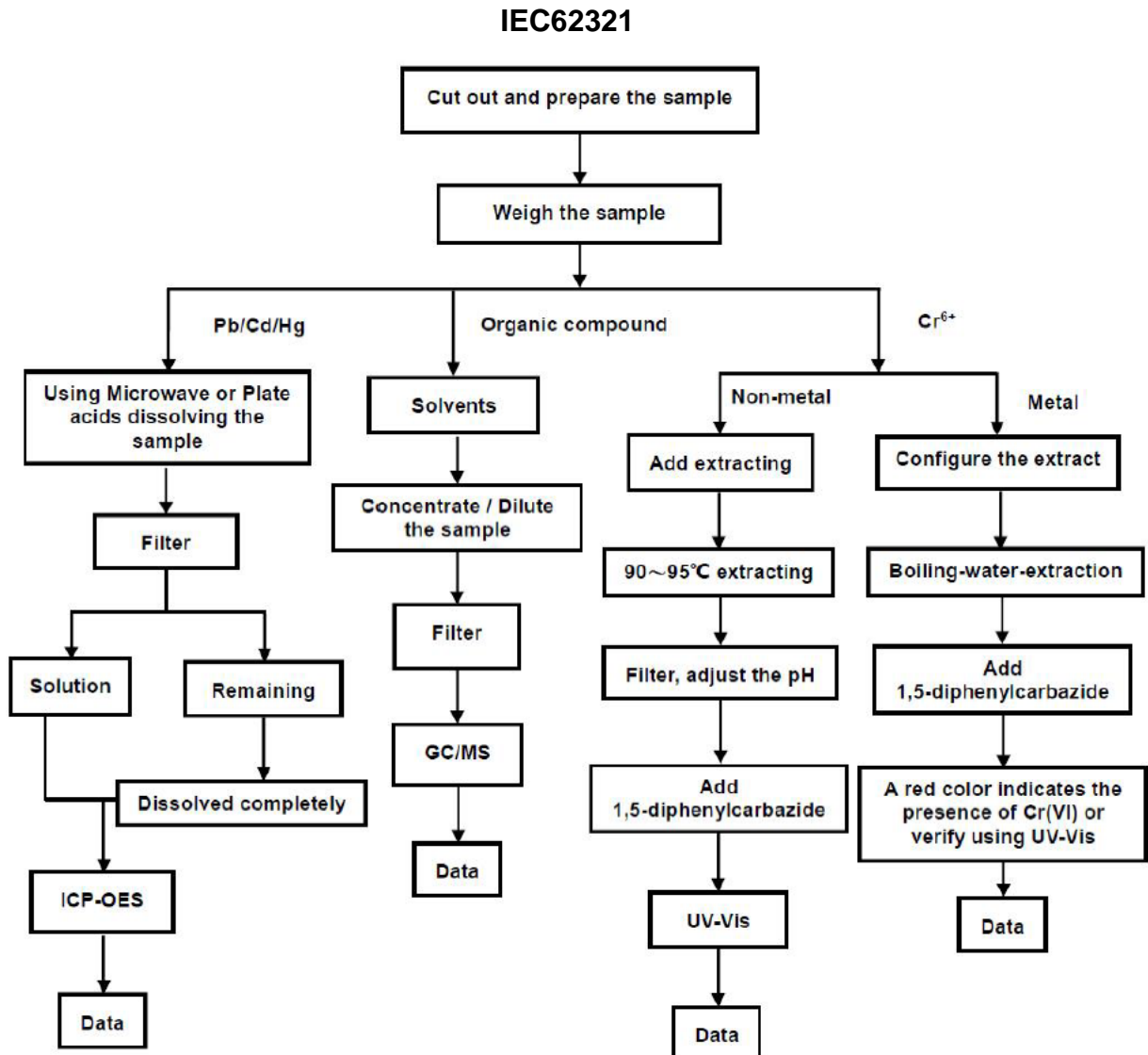
Sample No 01 : silver cyanide					
Test Item(s)	Method	Instrument	Unit	MDL	Result
Hg	IEC 62321-4:2013+AMD1:2017	ICP-OES	mg/kg	2	N.D.
Pb	IEC 62321-5:2013	ICP-OES	mg/kg	2	N.D.
Cd	IEC 62321-5:2013	ICP-OES	mg/kg	2	N.D.
Cr ⁶⁺	IEC 62321-7-2:2017	UV-Vis	mg/kg	2	N.D.
Monobromodiphenyl	IEC 62321-6:2015	GC/MS	mg/kg	5	N.D.
Dibromodiphenyl	IEC 62321-6:2015	GC/MS	mg/kg	5	N.D.
Tribromodiphenyl	IEC 62321-6:2015	GC/MS	mg/kg	5	N.D.
Tetrabromobiphenyl	IEC 62321-6:2015	GC/MS	mg/kg	5	N.D.
Pentabromobiphenyl	IEC 62321-6:2015	GC/MS	mg/kg	5	N.D.
Hexabromobiphenyl	IEC 62321-6:2015	GC/MS	mg/kg	5	N.D.
Heptabromobiphenyl	IEC 62321-6:2015	GC/MS	mg/kg	5	N.D.
Octabromobiphenyl	IEC 62321-6:2015	GC/MS	mg/kg	5	N.D.
Nonabromobiphenyl	IEC 62321-6:2015	GC/MS	mg/kg	5	N.D.
Decabromobiphenyl	IEC 62321-6:2015	GC/MS	mg/kg	5	N.D.
The above-mentioned total of (PBBs)	IEC 62321-6:2015	GC/MS	mg/kg	---	N.D.
Monobromodiphenyl ether	IEC 62321-6:2015	GC/MS	mg/kg	5	N.D.
Dibromodiphenyl ether	IEC 62321-6:2015	GC/MS	mg/kg	5	N.D.
Tribromodiphenyl ether	IEC 62321-6:2015	GC/MS	mg/kg	5	N.D.
Tetrabromodiphenyl ether	IEC 62321-6:2015	GC/MS	mg/kg	5	N.D.
Pentabromodiphenyl ether	IEC 62321-6:2015	GC/MS	mg/kg	5	N.D.
Hexabromodiphenyl ether	IEC 62321-6:2015	GC/MS	mg/kg	5	N.D.
Heptabromodiphenyl ether	IEC 62321-6:2015	GC/MS	mg/kg	5	N.D.

Octabromodiphenyl ether	IEC 62321-6:2015	GC/MS	mg/kg	5	N.D.
Nonabromodiphenyl ether	IEC 62321-6:2015	GC/MS	mg/kg	5	N.D.
Decabromodiphenyl ether	IEC 62321-6:2015	GC/MS	mg/kg	5	N.D.
The above-mentioned total of (PBDEs)	IEC 62321-6:2015	GC/MS	mg/kg	---	N.D.
DIBP	IEC 62321-8:2017	GC-MS	mg/kg	10	N.D.
DBP	IEC 62321-8:2017	GC-MS	mg/kg	10	N.D.
BBP	IEC 62321-8:2017	GC-MS	mg/kg	10	N.D.
DEHP	IEC 62321-8:2017	GC-MS	mg/kg	10	N.D.
F	EN 14582:2016	ICS 1500	mg/kg	10	N.D.
Cl	EN 14582:2016	ICS 1500	mg/kg	10	N.D.
Br	EN 14582:2016	ICS 1500	mg/kg	10	N.D.
I	EN 14582:2016	ICS 1500	mg/kg	10	N.D.
Cu	US EPA 3050B:1996	ICP-OES	mg/kg	5	N.D.
Fe	US EPA 3050B:1996	ICP-OES	mg/kg	5	N.D.
Pb	US EPA 3050B:1996	ICP-OES	mg/kg	5	N.D.
Zn	US EPA 3050B:1996	ICP-OES	mg/kg	5	N.D.
Ni	US EPA 3050B:1996	ICP-OES	mg/kg	5	N.D.
Ca	US EPA 3050B:1996	ICP-OES	mg/kg	5	N.D.
Be	US EPA 3050B:1996	ICP-OES	mg/kg	5	N.D.
Sb	US EPA 3050B:1996	ICP-OES	mg/kg	5	N.D.
Hexabromocyclododecane	US EPA 3550C:2007	GC-MS	mg/kg	10	N.D.
Ag	Titration	Titration	%	---	80.423

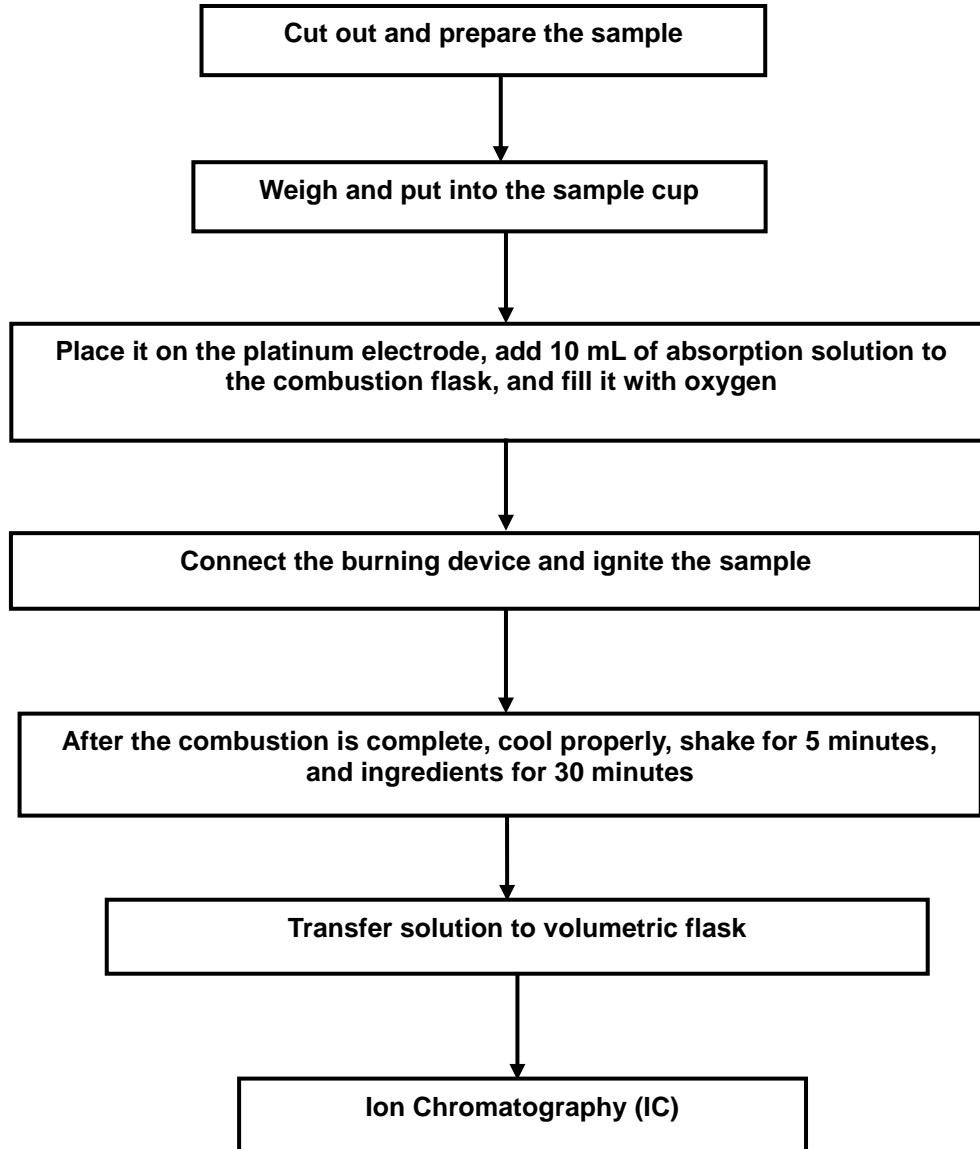
Note:

- (1) N.D. = Not detected.(<MDL) if the clients required the result must be value(s),the value just for reference.
- (2) MDL=Method Detection limit.
- (3) "---"show that there is not specification value.

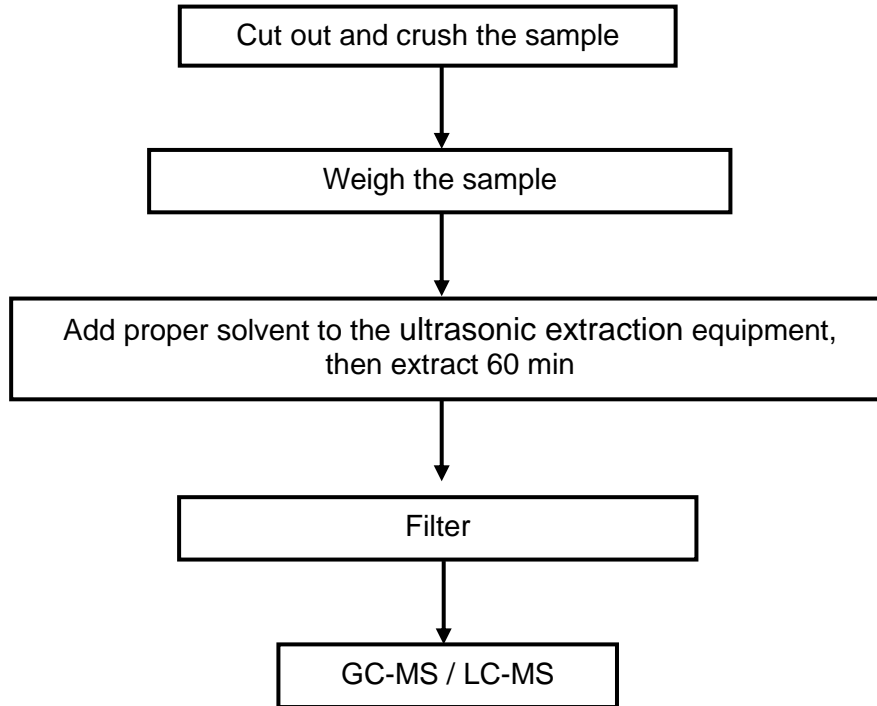
2.2 MEASUREMENT FLOW CHART



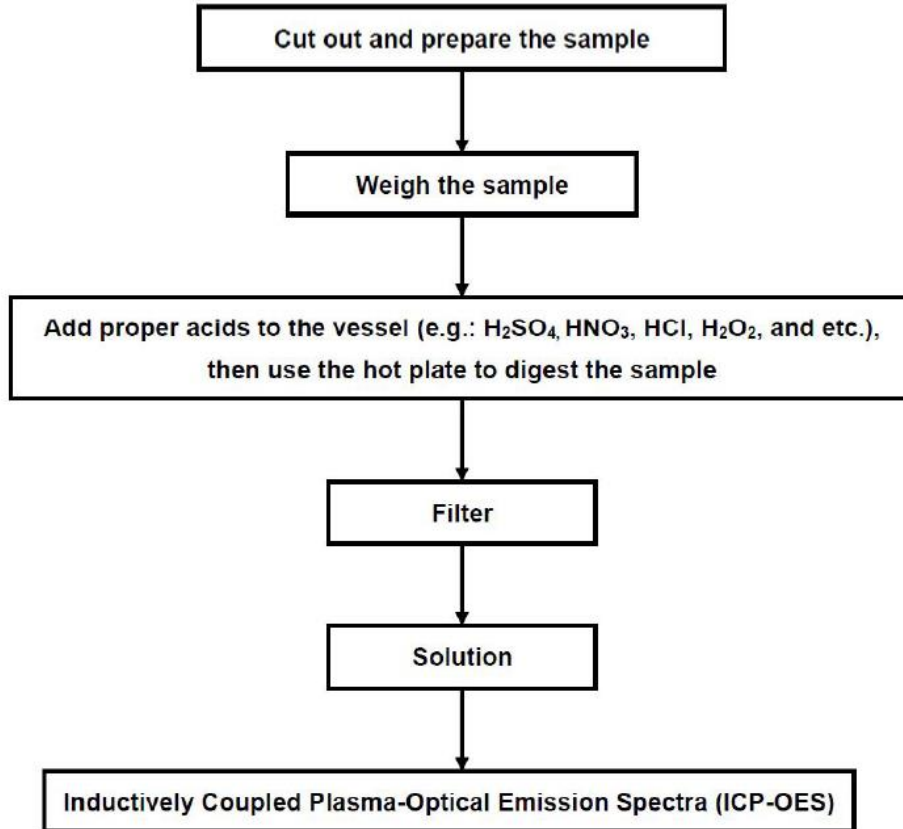
EN14582



US EPA 3550C



US EPA 3050B



-----End of Report-----